

## Summary of Neighbourhood Plan Sites Exhibition 7<sup>th</sup> & 8<sup>th</sup> April 2017,

The Neighbourhood Plan Committee would like to thank all the people that took the time to attend our exhibition in April and for all the helpful comments and concerns with the housing developments on the land in the Parish.

Between the Friday evening sessions (51) and the Saturday morning (73) we had 124 of the local community attend to view the accessed sites which the committee put forward for the parishes view and opinions to then be incorporated into the Slaugham Neighbourhood Plan.

From the 124 attendees we had 63 questionnaires completed on the two days and one sent back shortly after so making 64 responses in total.

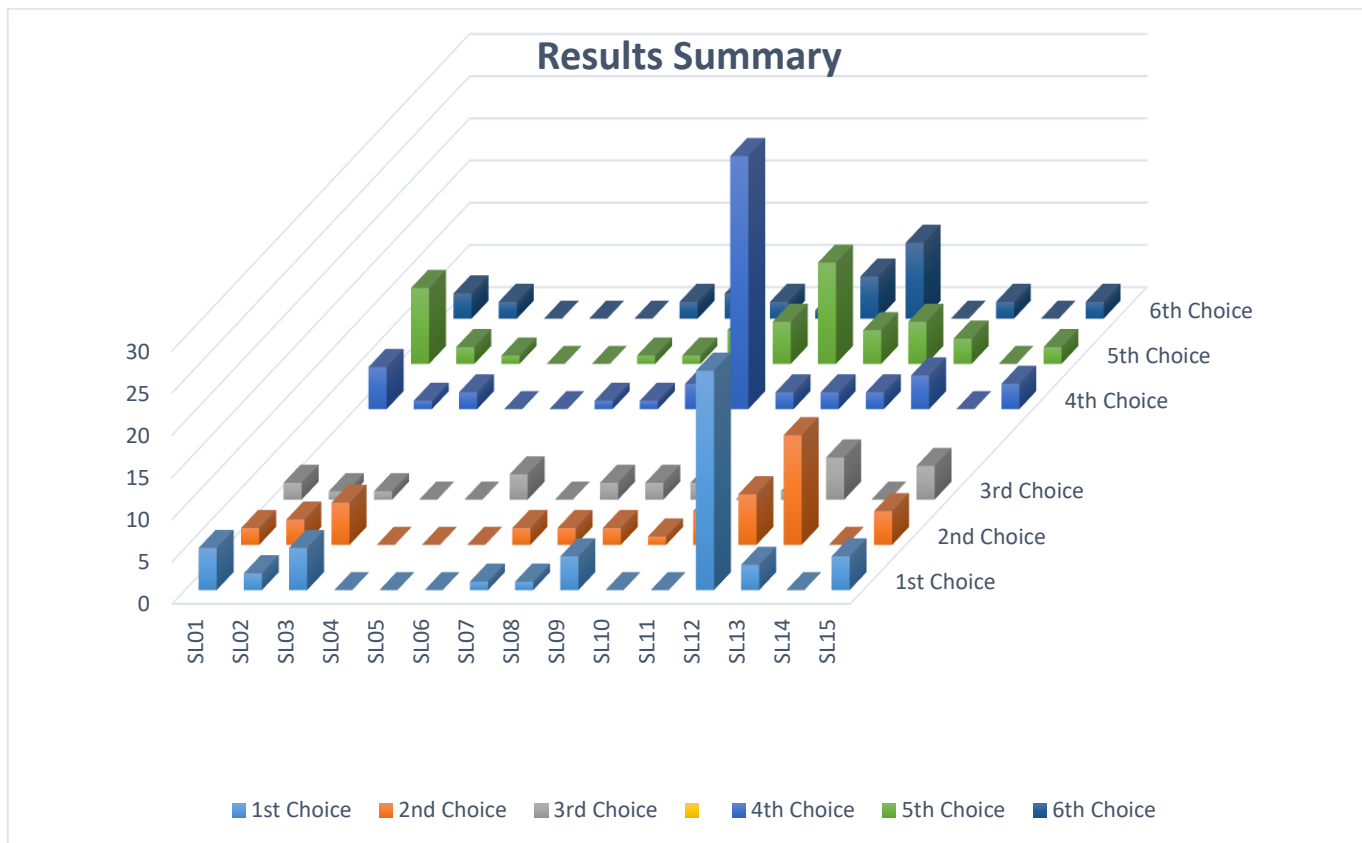
The feedback form requested that the attendees rank their three preferred sites from 1-3 with 1 being most and 3 least and the same with the three least preferred sites.

From these we have analysed the rankings of top 3 sites the attendees would like to put forward with and the 3 sites that were least preferred for any development.

The assessed sites Put forward for consideration in the Neighbourhood Plan are:

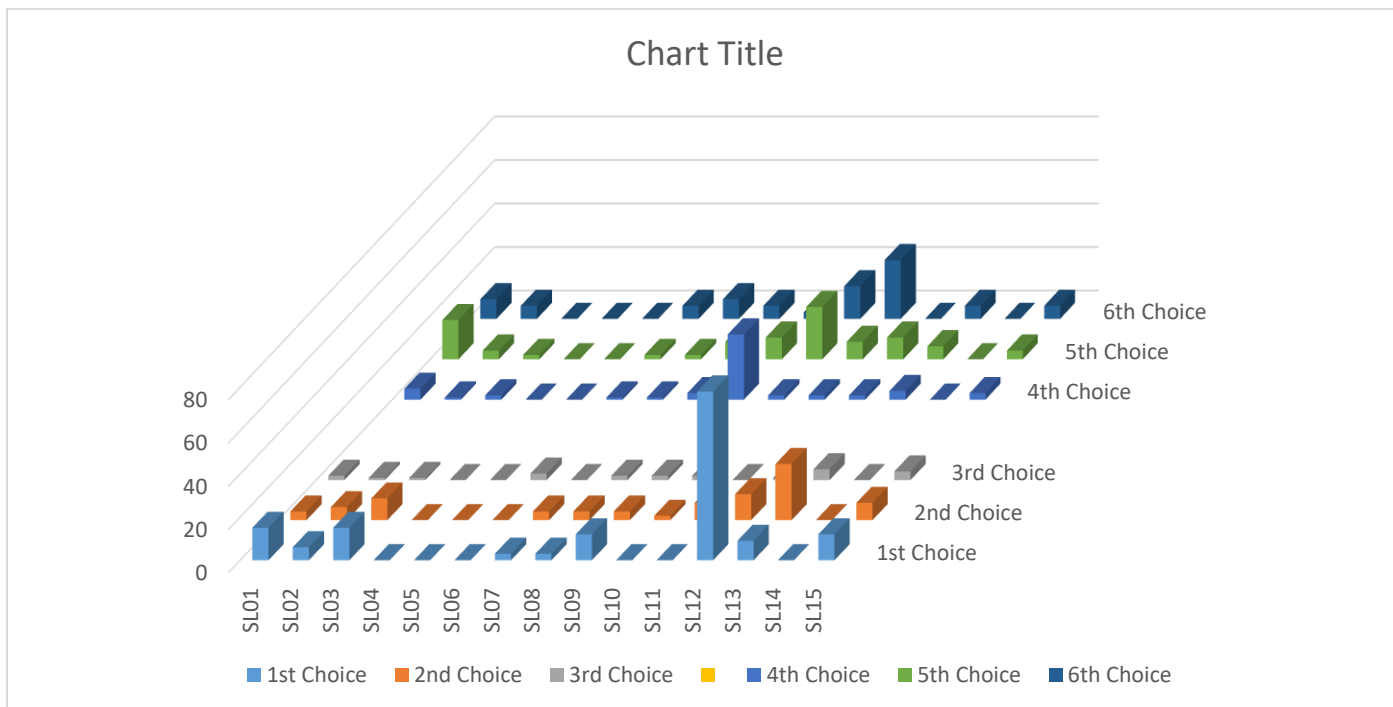
| <b>Slaugham Neighbourhood Plan Reference</b> | <b>Mid Sussex District Council: Strategic Housing Land Availability Assessment (SHLAA) Reference (April 2016)</b> | <b>Site Address</b>  |
|--|---|--|
| SL01   | SHLAA Ref: 243  | Land at Lower Tilgate, East of Pease Pottage.              |
| SL02   | SHLAA Ref: 674  | Land north of Pease Pottage, West of Old Brighton Road.    |
| SL03   | SHLAA Ref: 218  | Land north of the Golf House, Horsham Road, Pease Pottage. |
| SL06   | SHLAA Ref: 731  | Land to West of 63 Horsham Road, Pease Pottage.            |
| SL07   | SHLAA Ref: 153  | Land at Finches Field, South of Pease Pottage.             |
| SL08   | SHLAA Ref: 603  | Land south of Pease Pottage, West of Old Brighton Road.    |
| SL09   | SHLAA Ref: 181  | Land west of Truggers, Horsham Road, Handcross.            |
| SL10   | SHLAA Ref: 670  | Land at Coos Lane, Horsham Road, Handcross.                |
| SL11   | SHLAA Ref: 632  | Land South of Free Fold, Horsham Road Handcross.           |
| SL12 (East)                                  | SHLAA Ref: 127  | Land at St Martin Close (East).                            |
| SL13 (West)                                  | SHLAA Ref: 127  | Land at St Martin Close (West).                            |
| SL15   | Not assessed in SHLAA   | Land at Slaugham Garden Nursery, Slaugham.                 |

From the feedback forms the results of all the responses obtained by the attendees produce the following graph:

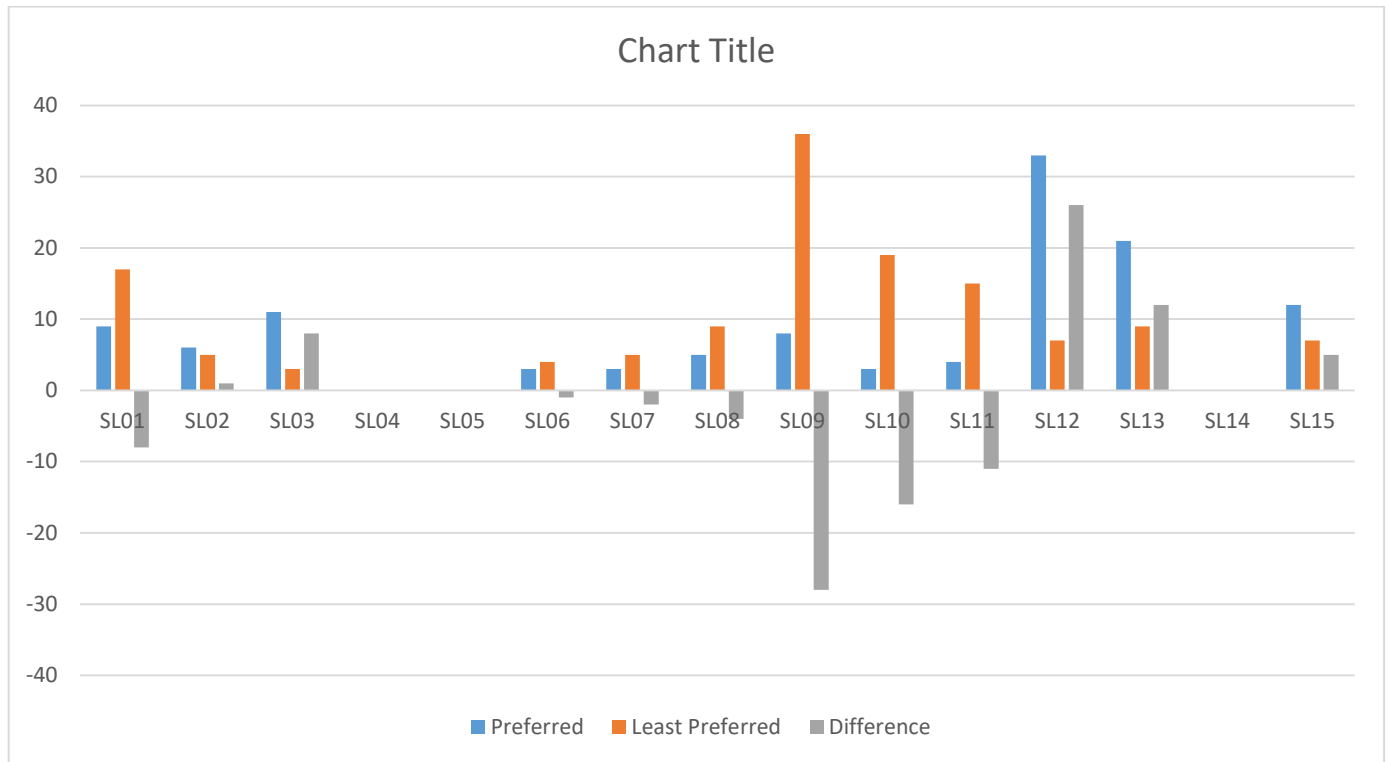


This chart shows all the raw data of all responses to the feedback form by individual site ranking.

To add some weighting we gave first choice preferred sites and least preferred sites a 3 point weighting, second choices 2 and third choices 1 to give the sites a more clearly defined scores based on the attendees preference.



To make this even clearer we then merged all the figures for each site to give a definitive ranking of most preferred and least preferred sites delivering the following results.



From this you can see that the most and least preferred sites are ranked by preference order below:

| Ranking most popular  | Slaugham Neighborhood Plan Reference | Site Address   |
|-----------------------|--------------------------------------|--|
| 1                     | SL12 (East)                          | Land at St Martin Close (East).                            |
| 2                     | SL13 (West)                          | Land at St Martin Close (West).                            |
| 3                     | SL03                                 | Land north of the Golf House, Horsham Road, Pease Pottage. |
| 4                     | SL15                                 | Land at Slaugham Garden Nursery, Slaugham.                 |
| 5                     | SL02                                 | Land north of Pease Pottage, West of Old Brighton Road.    |
| Ranking Least popular | Slaugham Neighborhood Plan Reference | Site Address   |
| 1                     | SL09                                 | Land west of Truggers, Horsham Road, Handcross.            |
| 2                     | SL10                                 | Land at Coos Lane, Horsham Road, Handcross.                |
| 3                     | SL11                                 | Land South of Free Fold, Horsham Road Handcross.           |
| 4                     | SL01                                 | Land at Lower Tilgate, East of Pease Pottage.              |
| 5                     | SL08                                 | Land south of Pease Pottage, West of Old Brighton Road.    |
| 6                     | SL07                                 | Land at Finches Field, South of Pease Pottage.             |
| 7                     | SL06                                 | Land to West of 63 Horsham Road, Pease Pottage.            |

The Neighbourhood Plan Committee will now use this information to put forward the sites that you have shown by preference to be considered as possible development land for the parish and be incorporated into the Slaugham Neighbourhood Plan.